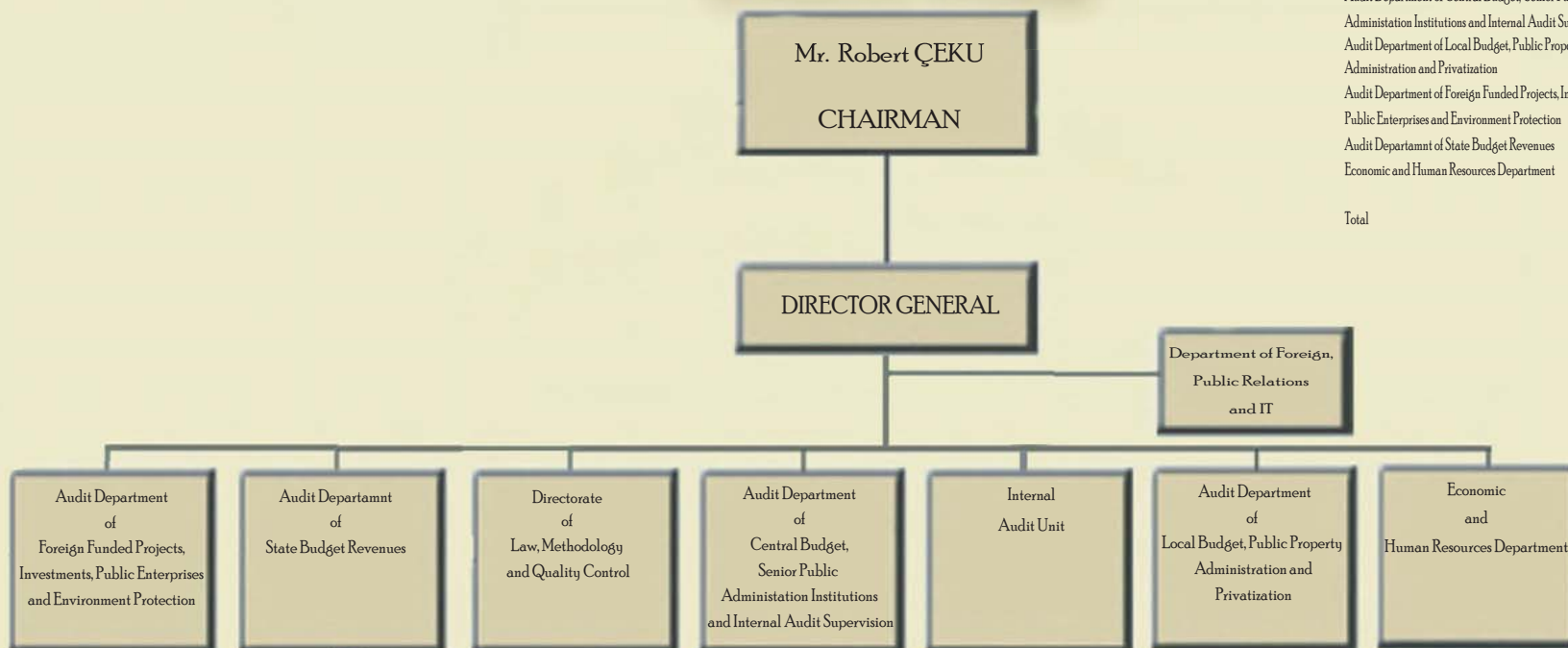


ORGANIZATIONAL STRUCTURE OF ALSAI



STATE SUPREME AUDIT STRUCTURE



Summary

Chairman	1
Secretariat	1
Director General	1
Internal Audit Unit	2
Department of Foreign, Public Relations and IT	9
Directorate of Law, Methodology and Quality Control	5
Audit Department of Central Budget, Senior Public Administration Institutions and Internal Audit Supervision	5
Audit Department of Local Budget, Public Property Administration and Privatization	37
Audit Department of Foreign Funded Projects, Investments, Public Enterprises and Environment Protection	25
Audit Department of State Budget Revenues	25
Economic and Human Resources Department	21
Total	160 employees